



Petite Friture

PRODUCT PRESENTATION
NEOTENIC

08.2024

SUMMARY

- 01 **THE DESIGNERS**
- 02 **THE COLLECTION**
- 03 **TECHNICAL SPECIFICATIONS**
- 04 **BEHIND THE SCENE**
- 05 **THE PRODUCTS**
- 06 **CSR COMMITMENTS**
- 07 **VISUALS**

THE DESIGNERS JUMBO

Justin Donnelly and Monling Lee founded the Jumbo studio in 2019 to express their vision of design as being fun and playful. Together, they design objects and environments that are guided by an ongoing interest in reductivism and whimsy. Jumbo's projects are both technical in execution and joyful in approach. The studio is a champion of affect in design, focused on shapes, materials and colours that convey emotion and delight.

Justin Donnelly is the Creative Director of Jumbo. He has published articles on design in Disegno Magazine and New York Magazine.

Monling Lee is Jumbo's artistic director; she enjoys exploring emotive shapes, appealing colours, and tactile materials.



NEOTENIC THE COLLECTION

The **Neotenic table lamp collection** was born of Jumbo's first collaboration with Petite Friture.

Its round, generous shapes reference the reassuring **aesthetics of childhood**. The designers' intention was to create an emotion, a visceral link between man and object.

Made by ceramist craftsmen in Portugal, the body requires a complex mould to achieve the rounded shape. A true display of expertise combining **craftsmanship and technique**, defying the laws of physics. The **glazed ceramic** enhance the Neotenic's colours.

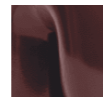
Mouth-blown glass give the finished piece an opaline finish that is soft to the touch, elevating the sinuous lines of the ceramic and the quality of light emitted by the bulb inside the globe. A pleasant, homogenous, and powerful light.

Available in two sizes – **small & large table lamp**, and in **4 colours**, this "chunky" looking lamp joins the playground of the Petite Friture collections.

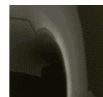
4 colours



Vanilla



Cherry



Green



Platinum



NEOTENIC THE COLLECTION

Pop design, sculptural
lamp

Glazed ceramic & glass

Hand made by skilled
craftsmen

Highly sustainable
thanks to the light bulb



NEOTENIC THE COLLECTION

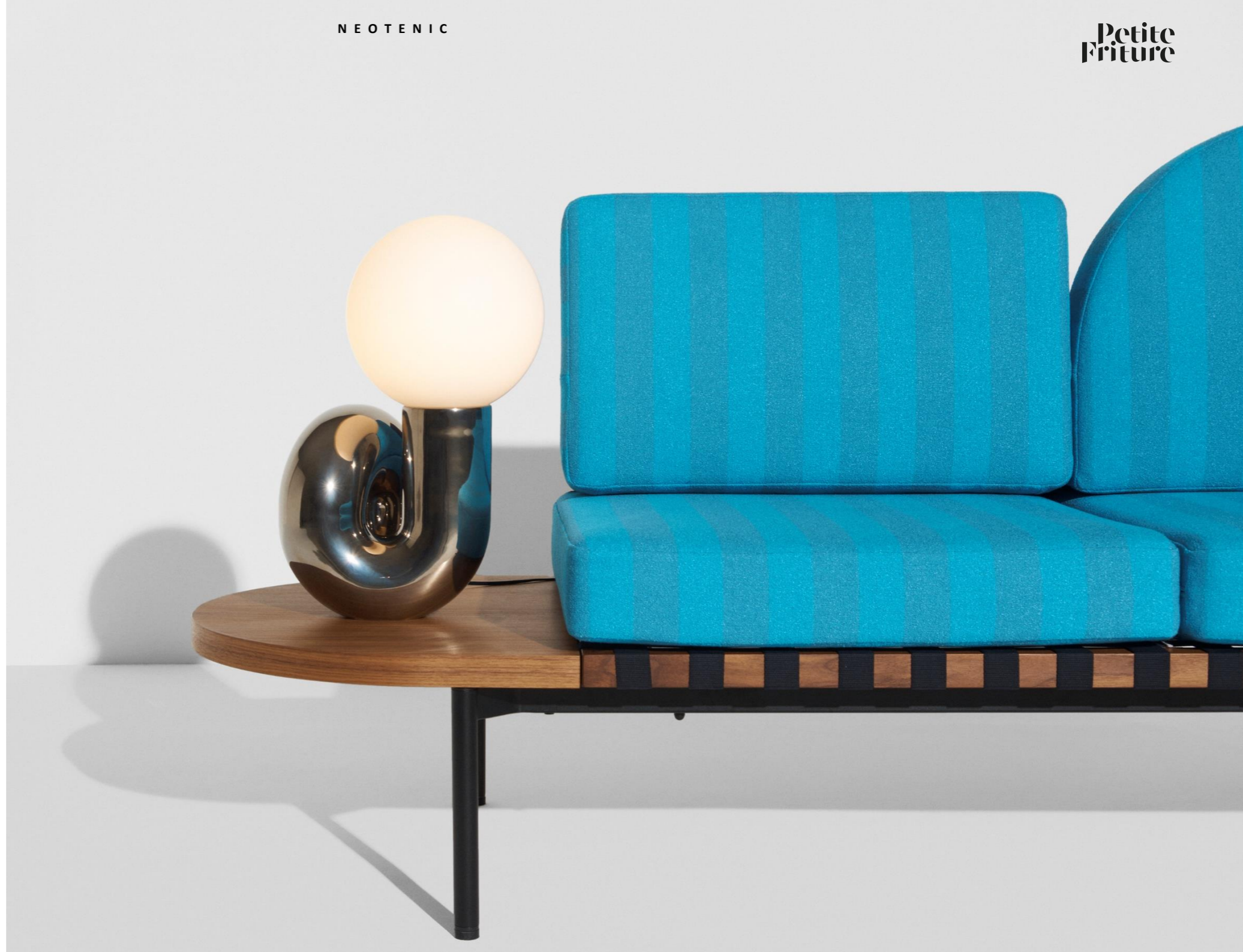
Platinum version

A timeless and distinctive colour: modern, elegant, versatile

The ultra-glossy finish comes from platinum contained in the enamel

Premium materials for a singular finish

A manufacturing process incorporating additional steps for such a unique finished look



NEOTENIC TECHNICAL SPECIFICATIONS

USE

Indoor only

MATERIALS

Ceramic and glass

ORIGIN

Europe

CERTIFICATIONS

CE, UKCA and UL

LIGHT SOURCE

Replaceable bulb – not included

SOCKET

CE, UKCA: G9 (small model) and E27 (large model)

UL: G9 (small model) and E26 (large model)

RECOMMENDED BULB

Small size: G9, 2700K, 500lm (CE, UKCA and UL)

Large size: E27 (CE) or E26 (UL) – 2700K – 1000lm – ø55mm max

LIGHTING SPECIFICATIONS

CE, UKCA: 220-240V, 50-60Hz, 40W max, dimmable, IP20

UL: 110-120V, 60Hz, 40W max, dimmable, IP20

Socket block: C (CE) and A (UL)

LIGHT DIMMER

Dimmer on a 180cm black cable

Progressive dimming from 100 to 10%

TECHNIQUES

Artisanal glazed ceramic: possibility of slight color variations

WARRANTY

2 years

NEOTENIC BEHIND THE SCENE

Glazed ceramic for a glossy finish

Craftmanship

Made in Portugal

Small imperfections



STEP 1: POUR THE LIQUID CERAMIC INTO THE MOULD



STEP 2: REMOVE FROM MOULD



STEP 3: SMOOTH THE SURFACE



STEP 4: ASSEMBLY



STEP 5: DRYING



STEP 6: FIRING OF RAW CERAMIC



STEP 7: GLAZING



STEP 8: DRYING AND FIRING



NEOTENIC BEHIND THE SCENE

An email containing platinum
– additional steps for this
platinum version

Craftmanship

Made in Portugal

Small imperfections



**STEP 9:
APPLYING VARNISH WITH A
BRUSH**

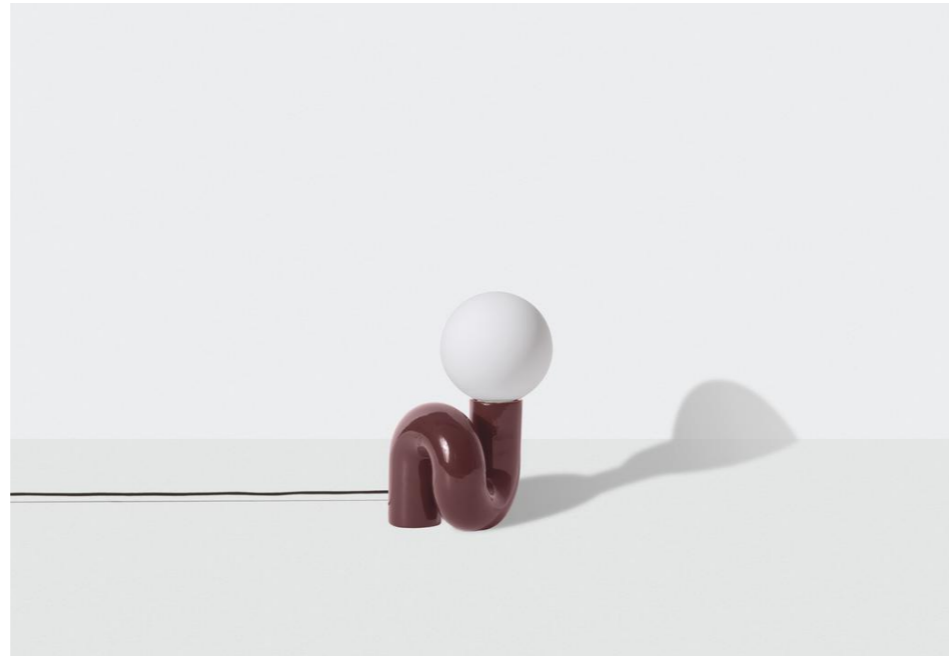


**STEP 10:
DRYING THE VARNISH**



**STEP 11:
COOKING**

NEOTENIC THE PRODUCTS



NEOTENIC SMALL TABLE LAMP



NEOTENIC LARGE TABLE LAMP



Vanilla



Cherry



Green



Platinum



Vanilla



Cherry



Green

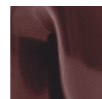


Platinum

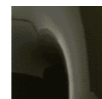
NEOTENIC SMALL TABLE LAMP



Vanilla



Cherry



Green



Platinum

ENVIRONMENT

Indoor

MATERIALS

Ceramic and glass

DIMENSIONS

L: 18,0 cm / 7,1 in

W: 16,0 cm / 6,3 in

H: 26,0 cm / 10,2 in

∅ sphere: 12,5cm / 4,9 in

Weight: 1,6 kg / 3,5 lb

Cable length: 180,0 cm / 70,9 in

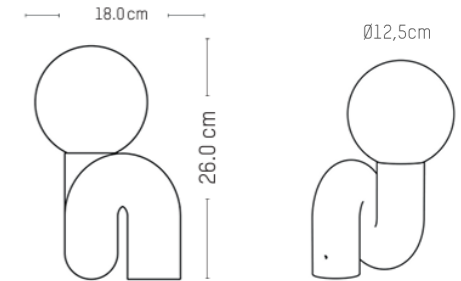
PACKAGING

25,0 x 25,0 x 46,0 cm / 9,8 x 9,8 x 18,1 in

Weight: 2,0 kg / 4,4 lb

CERTIFICATIONS

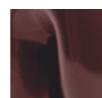
CE, UKCA, UL



NEOTENIC LARGE TABLE LAMP



Vanilla



Cherry



Green



Platinum

ENVIRONMENT

Indoor

MATERIALS

Ceramic and glass

DIMENSIONS

L: 34,0 cm / 13,4 in

W: 32,0 cm / 12,6 in

H: 51,0 cm / 20,1 in

∅ sphere: 25,0 cm / 9,8 in

Weight: 6,6 kg / 14,6 lb

Cable length: 180,0 cm / 70,9 in

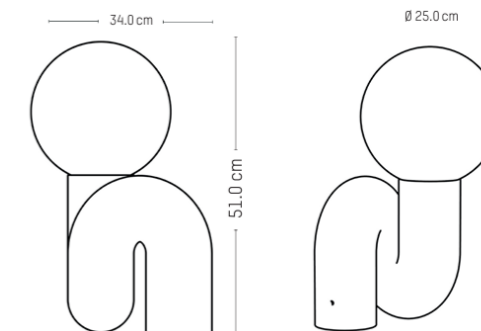
PACKAGING

39,0 x 39,0 x 72,0 cm / 15,4 x 15,4 x 28,3 in

Weight: 8,0 kg / 17,6 lb

CERTIFICATIONS

CE, UKCA, UL



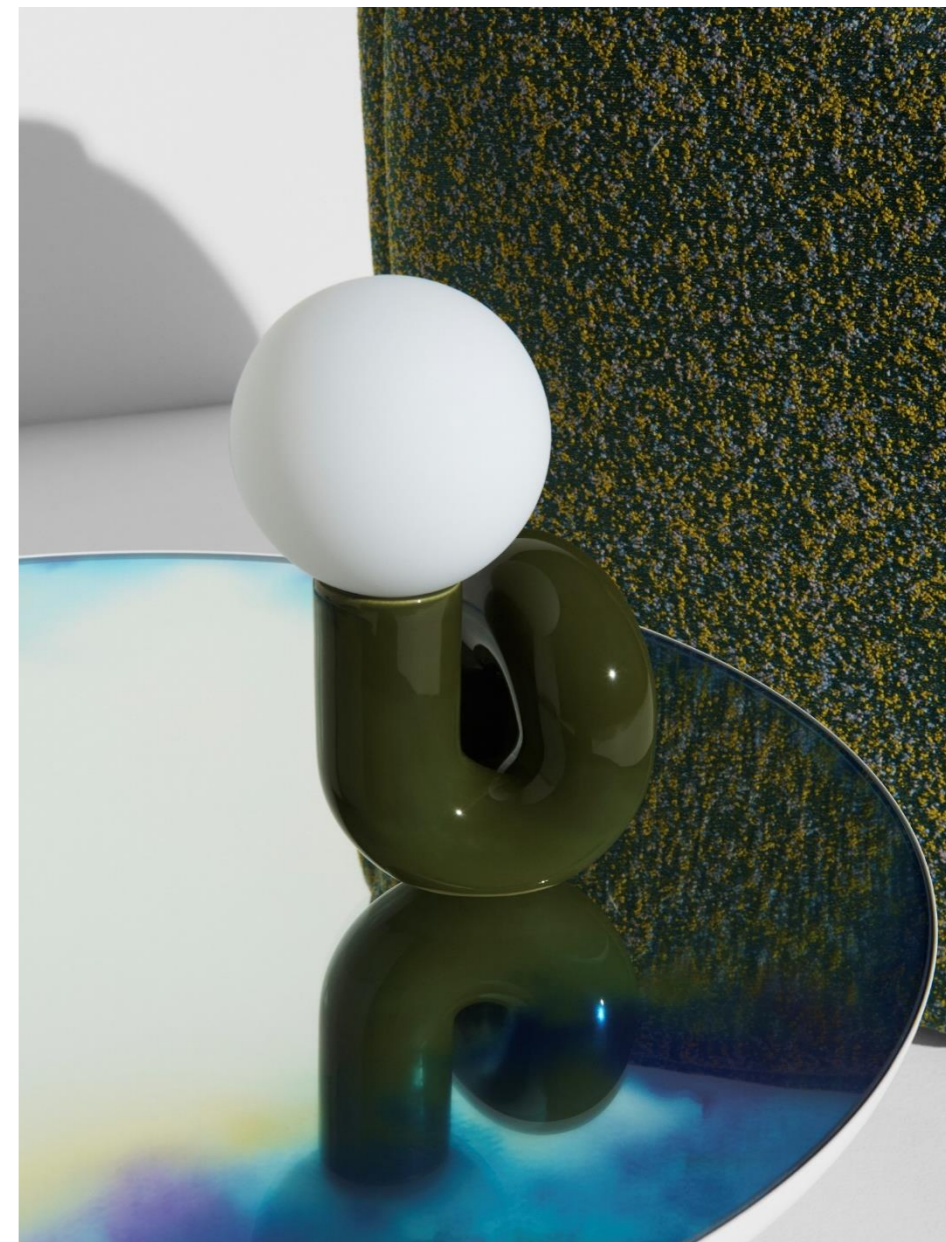
NEOTENIC CSR COMMITMENTS

ASSEMBLED BY APF FRANCE HANDICAP

At APF France Handicap, employees with disabilities work on the Neotenic collection, from assembly to packaging. A social commitment that advocates for an open, inclusive, and caring society.

HIGHLY SUSTAINABLE THANKS TO THE LIGHT BULB

So that Neotenic table lamps can last a lifetime, they have been equipped with light bulbs that can be replaced at any time.



VISUALS



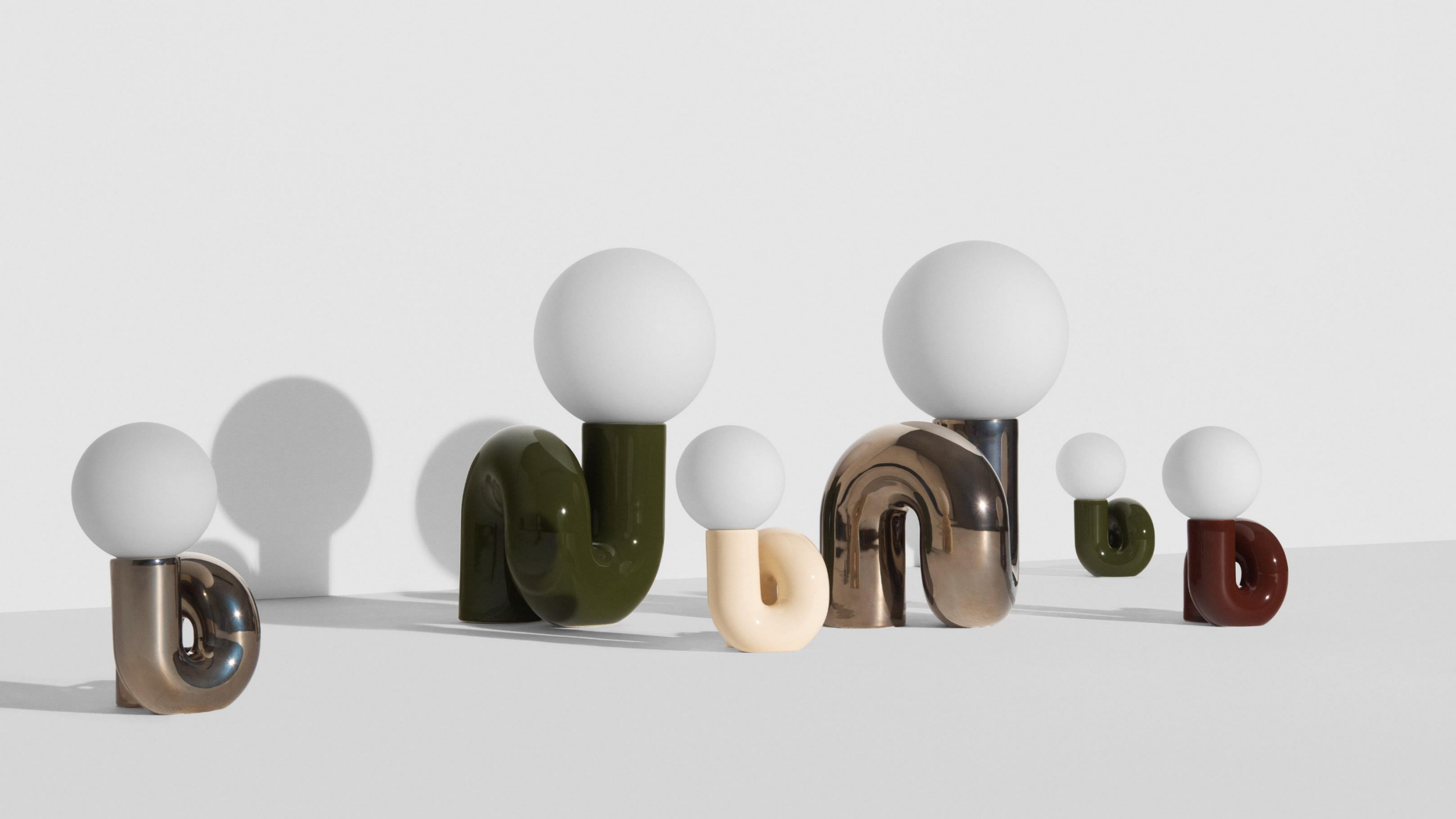
Packshots



Lifestyle



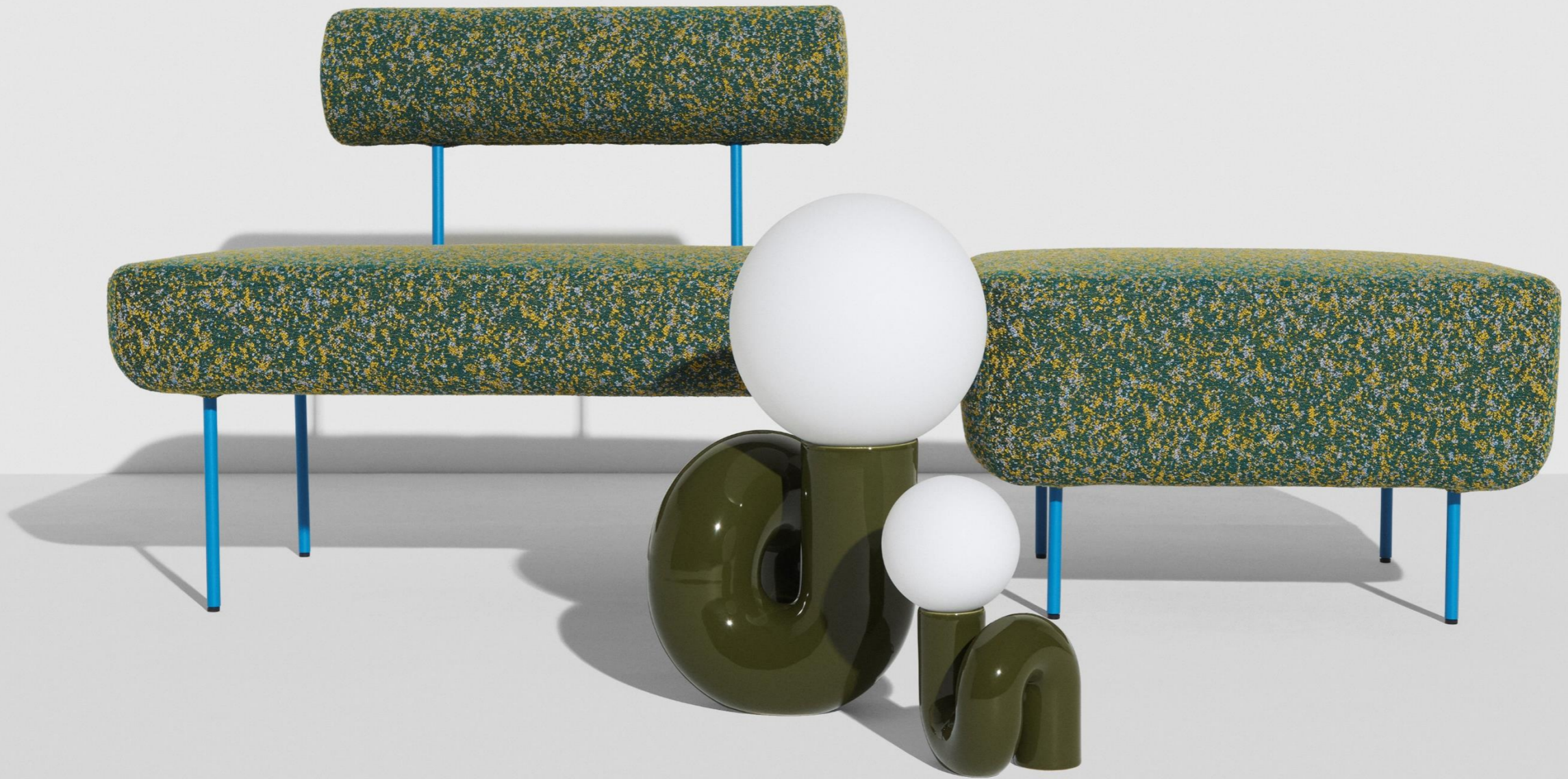


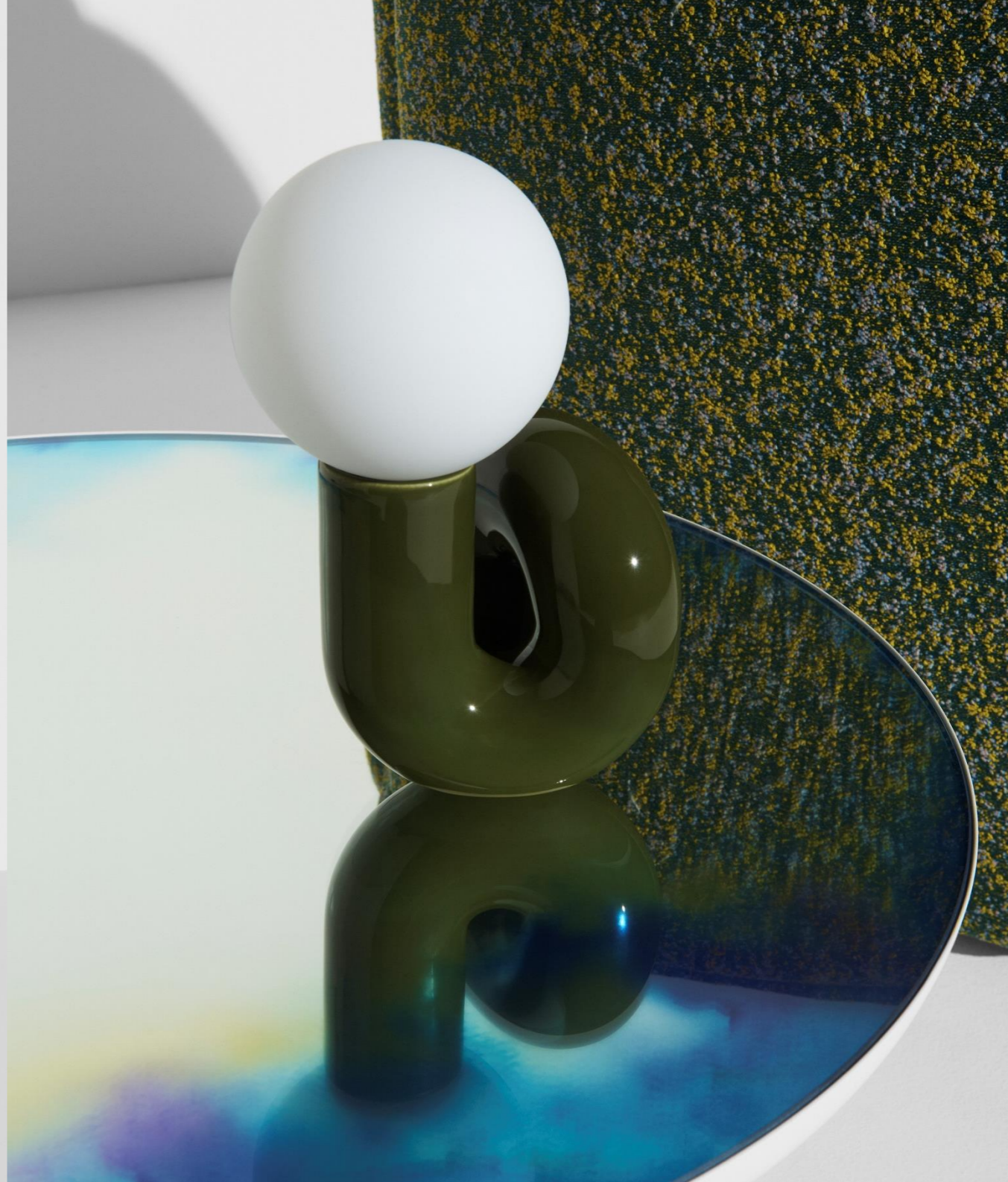












**Petite
Friture**